



**BOARD OF COUNTY COMMISSIONERS  
WARREN COUNTY, OHIO**

406 Justice Drive, Lebanon, Ohio 45036

[www.co.warren.oh.us](http://www.co.warren.oh.us)

[commissioners@co.warren.oh.us](mailto:commissioners@co.warren.oh.us)

Telephone (513) 695-1250

Facsimile (513) 695-2054

**TOM GROSSMANN**

**SHANNON JONES**

**DAVID G. YOUNG**

**WORK SESSION AGENDA**

*February 6, 2024*

- #1 9:30 *Work Session—Gary Estes, Deputy Director of Telecommunications, to Discuss the CAD Incident Messaging Feed Policy*
- #2 10:00 *MaryLynn Lodor, General Manager of Miami Conservancy District, to Present Updates Relative to Flood Protection and Readjustments of Benefits*
- #3 10:30 *Bill Spry, President of Spryex Communications, to Discuss Placement of Radio Antenna to Existing Tower*

The Board of Commissioners' public meetings can now be streamed live at [Warren County Board of Commissioners - YouTube](#)



# CAD Incident Messaging

## POLICY STATEMENT

Effective XX 2024

The Warren County Board of County Commissioners provides Computer Aided Dispatch (CAD) services to Authorized Jurisdictions and Authorized Users via the Warren County Emergency Services Department and the Warren County Telecommunications Department.

### Authorized Jurisdictions and Authorized Users

Authorized Jurisdictions and Authorized Users are determined by the Warren County Board of County Commissioners. This Policy requires those Authorized Jurisdictions and Authorized Users to also use the Warren County Communications Department for primary Dispatch Services.

The Dispatch via Mobile CAD and Incident Data feeds contain the unique capability of having Incident information that may include protected medical data or personal identifiable information and is only available to those outside the operations of Warren County Government (Relevant Commissioners Departments, Prosecutors Office) that are:

First Responders as defined in Section 4765.01 of the Ohio Revised Code  
Law Enforcement as defined in section-2901.01(11) of the Ohio Revised Code

### CAD Incident Information

As part of these services, CAD Incident information is provided by the following methods:

1. Dispatch via Radio.
2. Dispatch via Mobile CAD.
3. CAD to CAD Interfaces
4. Incident Data feeds to applications designed for 1<sup>st</sup> Responders. (Active 911). All costs associated with this feed are the responsibility of the authorized Jurisdiction.

### Information Access and Protection

Authorized Jurisdictions and Authorized Users are responsible to ensure access to the Incident information is protected appropriately and only those individuals defined herein and meeting the requirements of this policy have access. Authorized Jurisdictions and Authorized Users shall keep an updated roster of individuals to whom the authorized jurisdiction has granted access to incident data feeds.

### Written Acknowledgement

Such roster shall be provided, including any and all updates when they are made, not just changes, to the Warren County Telecom Department using the procedure in this Policy. The requesting jurisdictions shall further provide written acknowledgment of this policy prior to being granted access to incident feeds. Written acknowledgment shall be provided by the City/Village/Township administrator.

### Mobile CAD Applications

Mobile CAD applications shall only be installed on jurisdiction owned and managed devices, not personal devices.

### Support for CAD information Feeds

All feeds must be approved on an individual basis by Telecommunications and are not supported during off hours. Telecommunications is not responsible for supporting the installation, configuration or performance of the applications using them.

### Currently Supported feeds

1. Active 911 Feed Requirements: CAD Paging – Simple Network Paging Protocol (SNPP)
2. IamResponding Feed Requirements: CAD Paging - Email
3. eDispatches Feed Requirements: CAD Paging - Email
4. Battalion3 Software (St19): Email via Hiplink
5. FlowMSP Preplan software – (St76) – Email via Hiplink

### PROCEDURE

#### CAD Incident Messaging Feeds

Email feed will be provided to an Authorized Jurisdictions and Authorized Users using a single email address for each approved application; provided and maintained by the Authorized jurisdiction to feed an approved application.

To establish, add or modify a feed to a supported application or seek approval for a new application the Authorized jurisdiction shall contact the Telecom Helpdesk at [help@wcoh.net](mailto:help@wcoh.net). This will allow Telecom to see the request in writing and track via the Telecom Ticket System.

#### Roster Updates

To comply with the CAD Incident Messaging Feed policy requirement that a roster showing who the Authorized Jurisdiction has given access should be submitted to [help@wcoh.net](mailto:help@wcoh.net) with the subject CAD Incident Messaging Feed.

By signing below, I acknowledge that I have read and understand. This must be signed by the current City/Village/Township administrator.

Print Name: \_\_\_\_\_ Position: \_\_\_\_\_

Date: \_\_\_\_\_ Signature: \_\_\_\_\_



# Miami Conservancy District: Readjustment Update for Flood Protection

MaryLynn Lodor, General Manager

February 6, 2024





THE MIAMI  
CONSERVANCY  
DISTRICT

## What we do



Preserve

Flood Protection



Protect

Water Stewardship

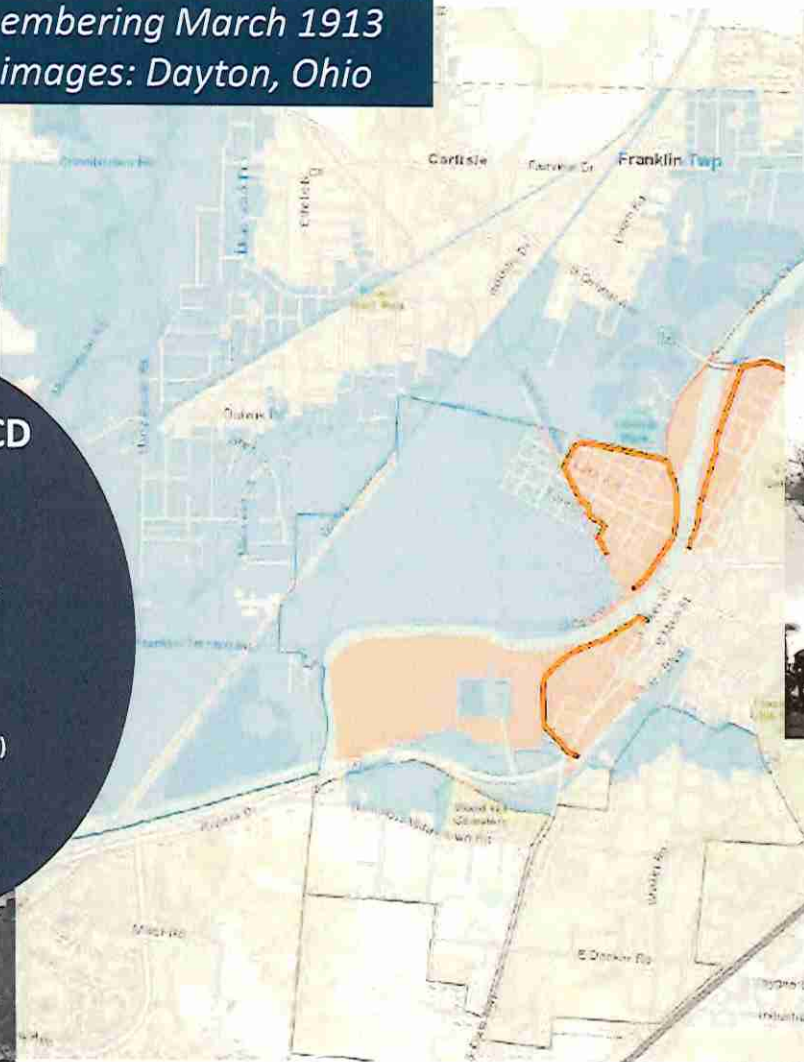


Promote

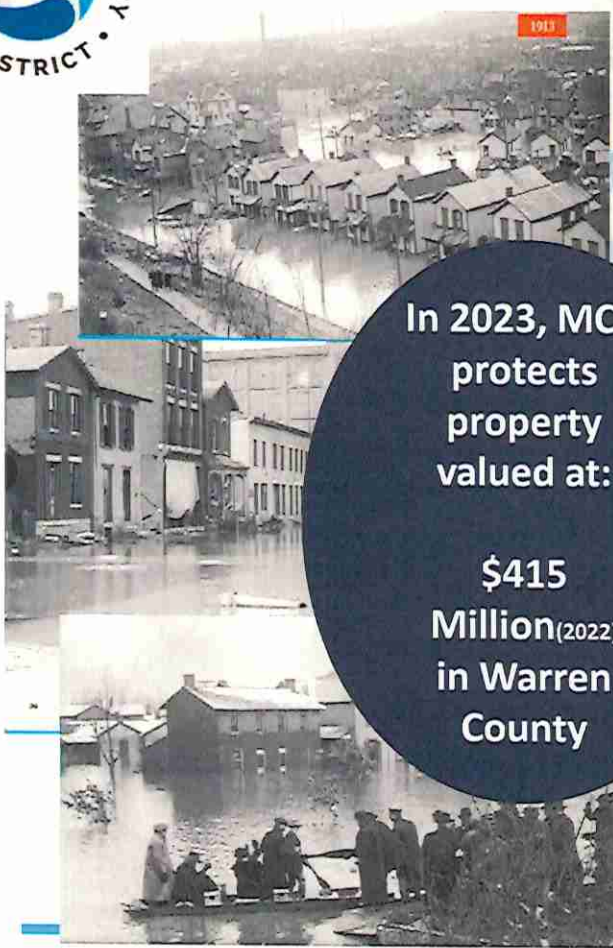
River Recreation



# Keeping the Promise: Remembering March 1913 Flood depths and images: Dayton, Ohio



In 2023, MCD  
protects  
property  
valued at:  
  
**\$415**  
Million<sup>(2022)</sup>  
in Warren  
County





THE MIAMI  
CONSERVANCY  
DISTRICT

What is  
protected by  
MCD?

- **1 Million people**
- **More than 47,000 properties in five counties**
- **More than \$10 billion worth of buildings and land**
- **6 hospitals**
- **60+ schools and colleges**
- **814 miles of public roads**
- **14 wastewater treatment plants**
- **9 water treatment plants**
- **Drinking water resources**
- **Outdoor recreation**





THE MIAMI  
CONSERVANCY  
DISTRICT

# What is MCD's Integrated Flood Protection System?

- 5 dry dams
- 55 miles of levees and floodwalls
- 185 floodgates
- 1,100 acres of floodplain
- 35,000 acres of land that store water
- Improved channels in cities

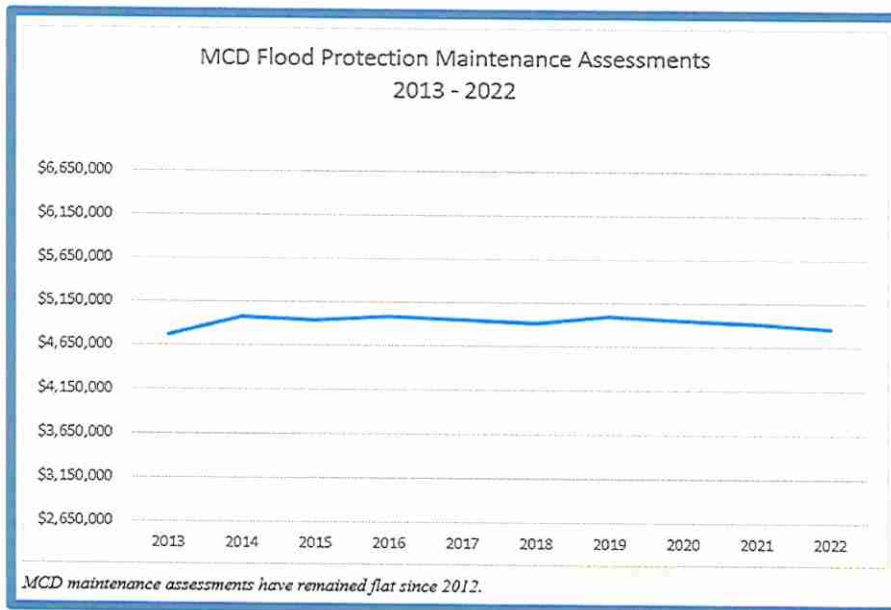






# What are the risks of MCD Flood Protection System?

- Flat revenues, while expenses and needs have increased
- 3-year delay in conducting a “Readjustment of Appraisal of Benefits”

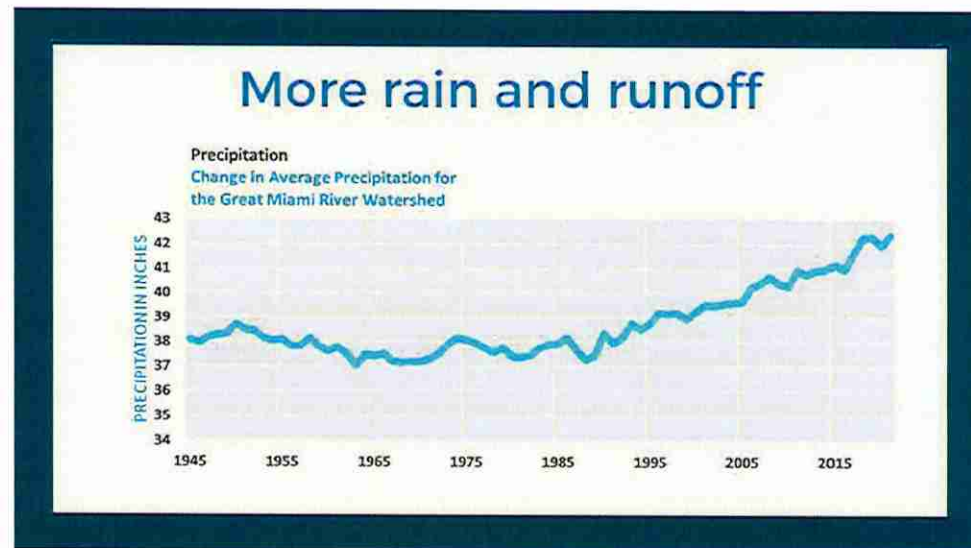
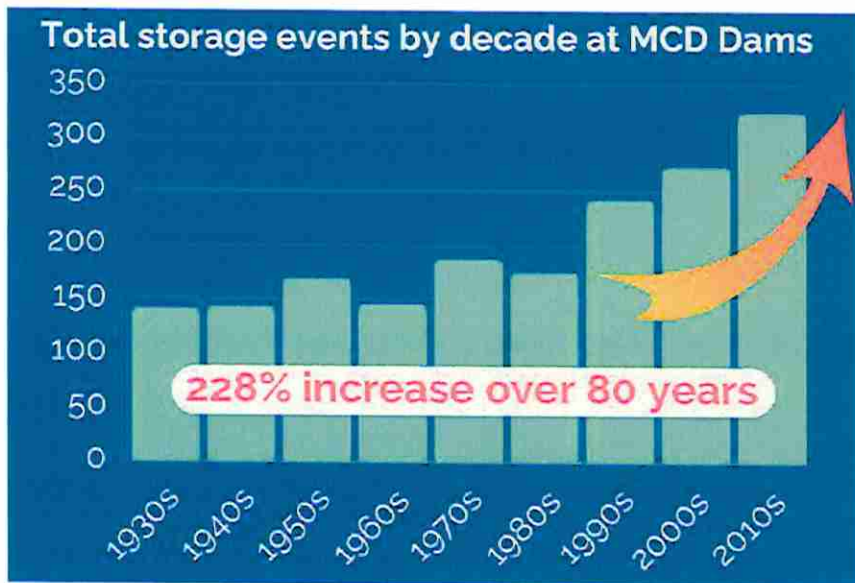


**Capital Assessment – Dam  
Safety Initiative (DSI)  
expired in 2022**



# What are the risks of MCD Flood Protection System?

- Climate trends
- Aging infrastructure



# Flood Inundation Map for Franklin and Carlisle, Ohio



Study Area 10 ft 11 ft 12 ft 13 ft 14 ft 15 ft 16 ft 17 ft 18 ft 19 ft 20 ft 21 ft 22 ft 23 ft 24 ft 25 ft About this map

## Franklin Carlisle Study Area



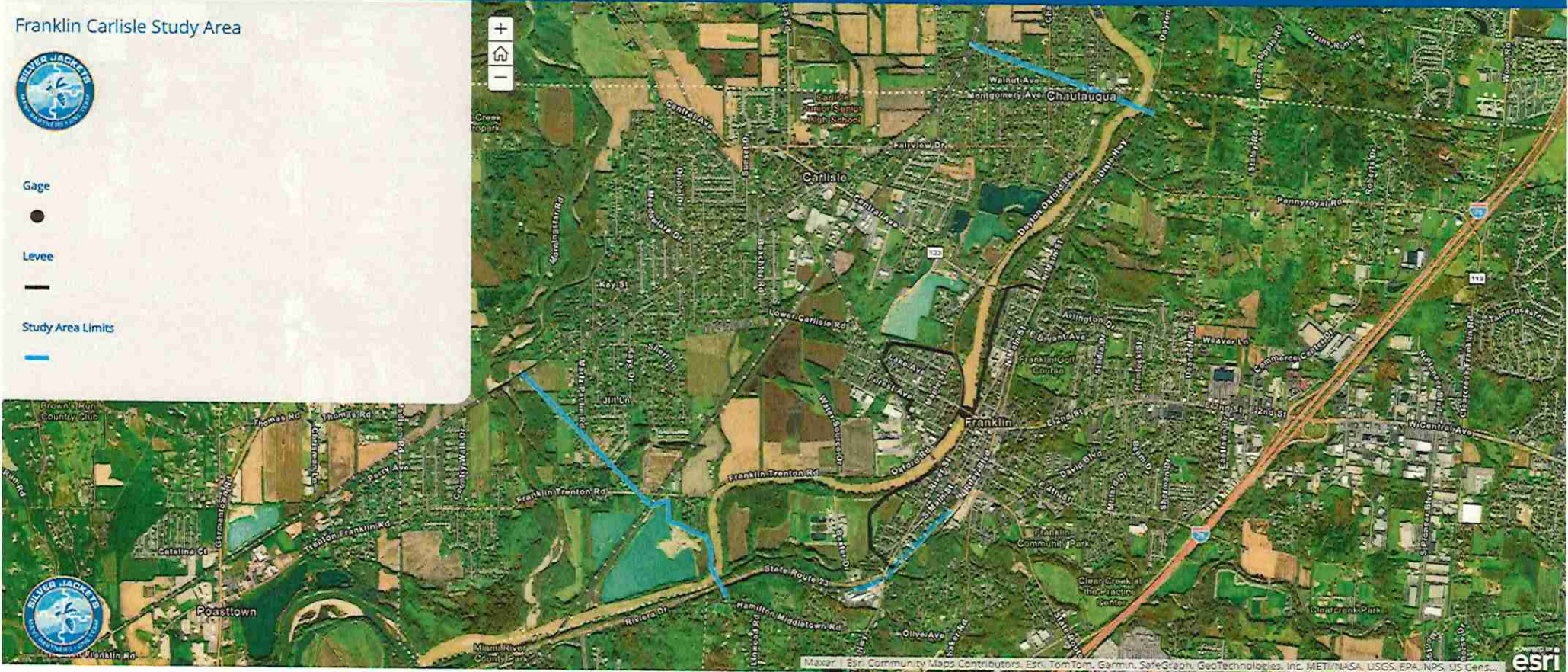
Gage



Levee



Study Area Limits



# MCD has made investments over the last 20 years to reduce risk of failure .....*but more is needed*



## \$24.5M

Spent through 2022 for analysis, design, and construction of projects which improved the safety of the flood protection system.

- Installed over 208 relief wells to control threat of underseepage at all five MCD dams
  - Placed impervious material at the crest of three dams to protect against seepage
  - Repaired concrete and walls at Lockington Dam to improve stability
  - Improved floodgates, revetment, and floodwalls in multiple cities
- Protecting. Preserving. Promoting.

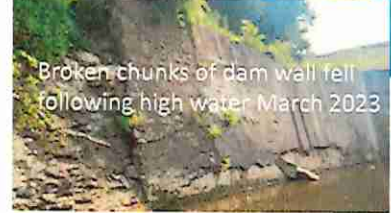
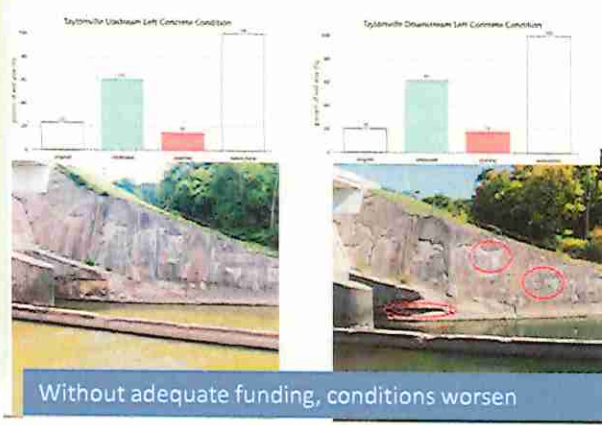
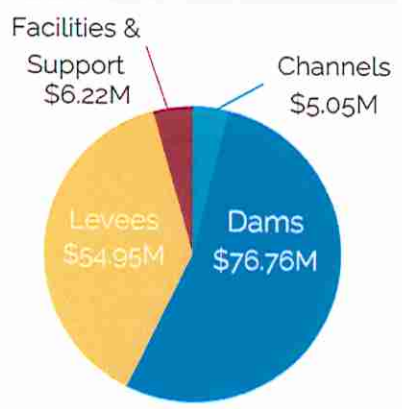
# MCD's Identified Capital Needs

**Aging Infrastructure**

MCD's Dam Safety Initiative Capital Assessment Expired in 2022

Total estimated priorities rehab needs of flood protection (\$2022)

**\$140M**



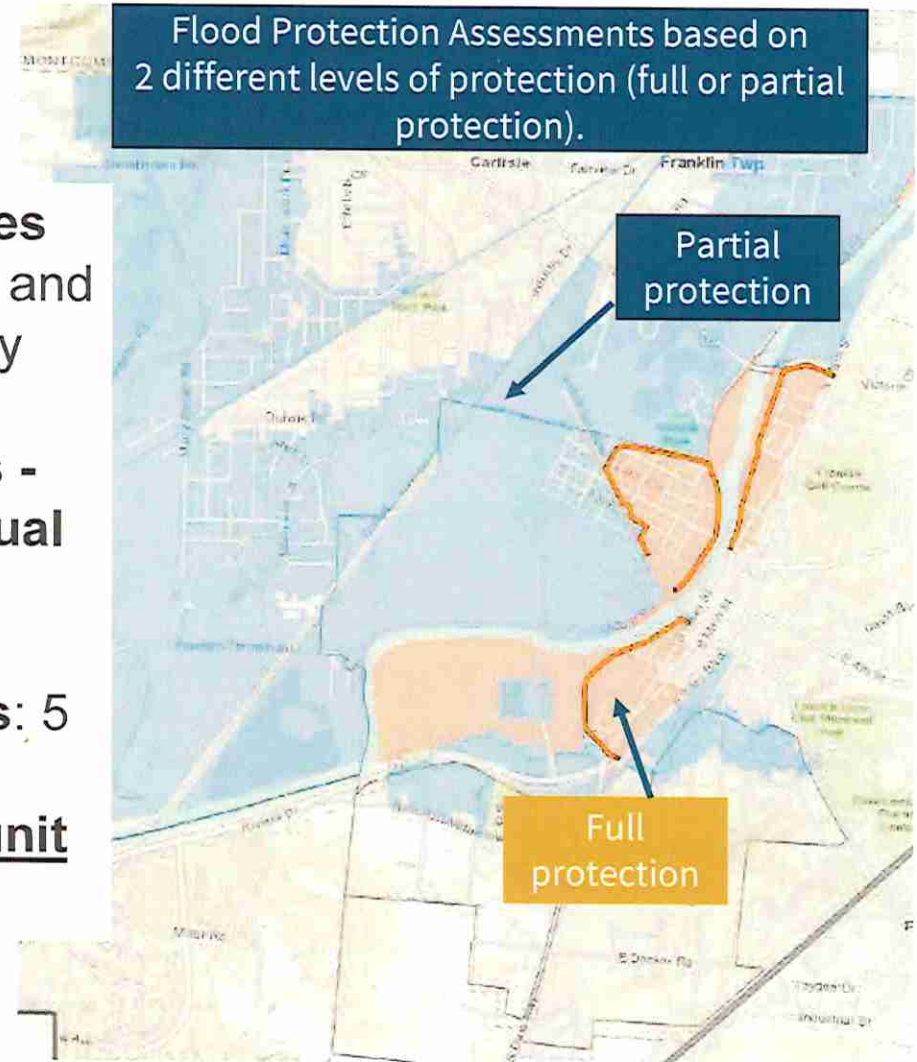
Protecting. Preserving. Promoting.



THE MIAMI  
CONSERVANCY  
DISTRICT

## How is MCD funded?

- **Individual properties** that flooded in 1913 and are now protected by MCD receive **flood protection benefits** - pay **annual individual assessments**.
- **Local governments:** 5 counties & 21 communities - pay **unit assessments**





# Readjustment of the Appraisal of Benefits 2024

- Conservancy Court may order a “Readjustment of the Appraisal of Benefits” when they find a material change in property value or condition
  - May not occur more frequently than once every 6 years, per ORC 6101.54
- Readjustment was delayed 3 years by Butler County Appeal
  - Previous Readjustment: Effective 2012
- Board of Appraisers reviews and updates the benefit methodology
  - Ensures assessments are fair and equitable
  - MCD has used that methodology to calculate new benefits.
  - 2023 county auditor property values are used to calculate new flood protection benefits for the 7<sup>th</sup> Readjustment



Kettering Medical Center – Troy



CareSource – Dayton



Children's Medical Center – Dayton



Marcum Apts - Hamilton



Water Street Flats Apts – Dayton



Spooky Nook – Hamilton



Protecting. Preserving. Promoting.

7<sup>th</sup> Readjustment of the Appraisal of Benefits

# PRELIMINARY FINDINGS OF READJUSTMENT

---

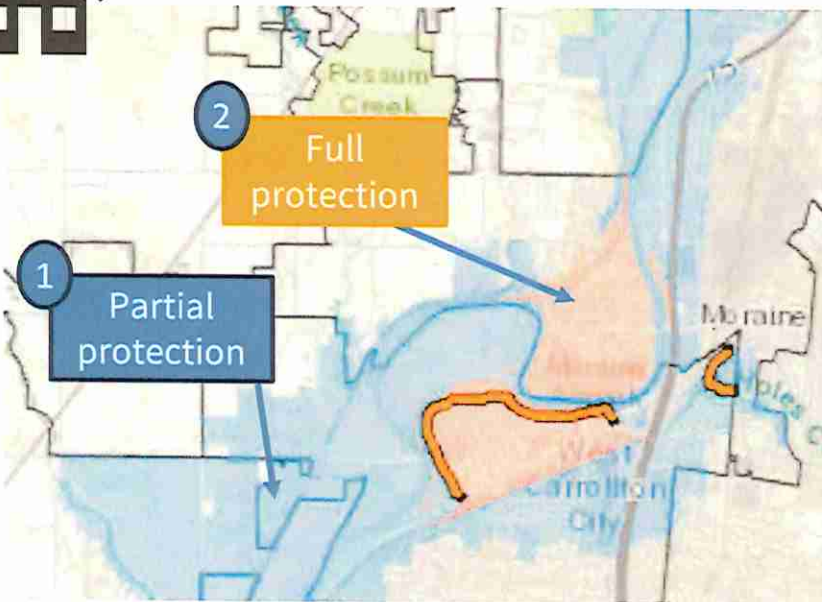
Protecting. Preserving. Promoting.



### 3 Examples of Impact: \$100K property value, 3 different flood factors

Maintenance Assessment @2.78%      Capital Assessment @1%

Estimated Maintenance Assessment (2023 values) & 8 year forecast for maintenance needs



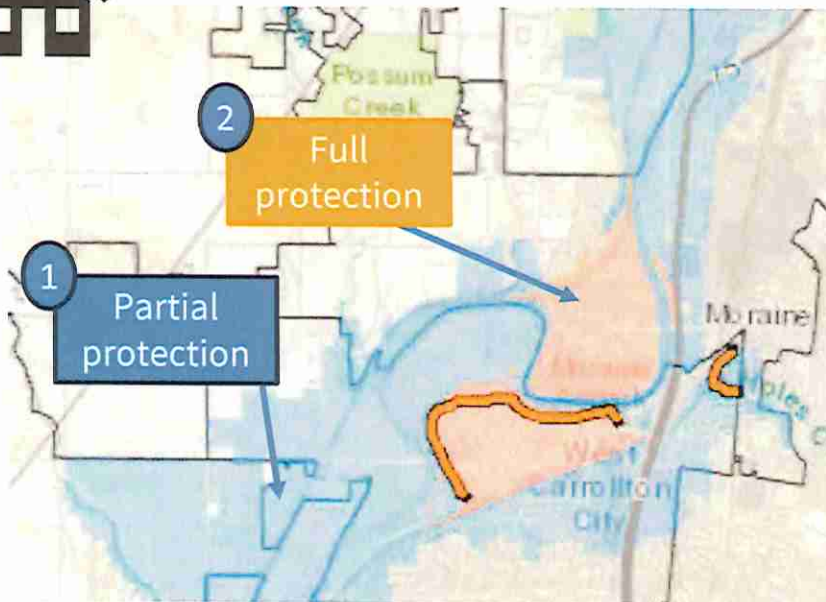
1 Full Protection Area (orange areas) 10' of Flood Depth (30%)	
<b>MAINTENANCE ASSESSMENT (2.78%)</b> • \$62 increase (\$292/year)	<b>CAPITAL ASSESSMENT (1%)</b> • \$105/year
<b>\$33/month</b>	

Full Protection Area (orange areas) 0.5" of Flood Depth (6%)	
<b>MAINTENANCE ASSESSMENT (2.78%)</b> • \$12 increase (\$58/year)	<b>CAPITAL ASSESSMENT (1%)</b> • \$22/year
<b>\$7/month</b>	

# 3 Examples of Impact: \$100K property value, 3 different flood factors

Maintenance Assessment @2.78%      Capital Assessment @1%

Estimated Maintenance Assessment (2023 values) & 8 year forecast for maintenance needs

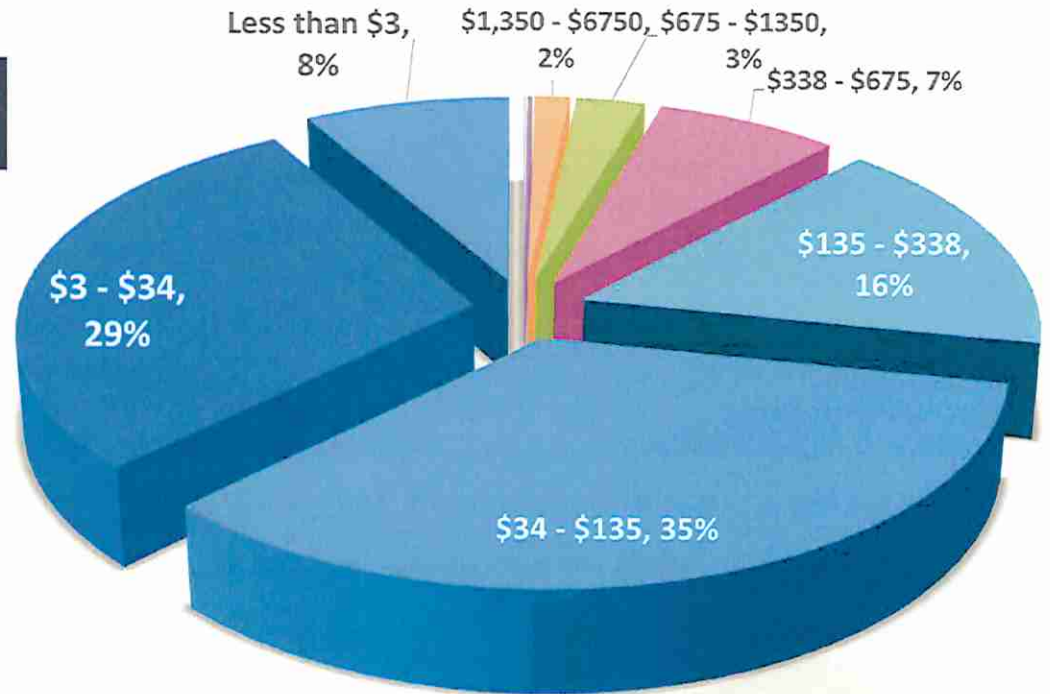
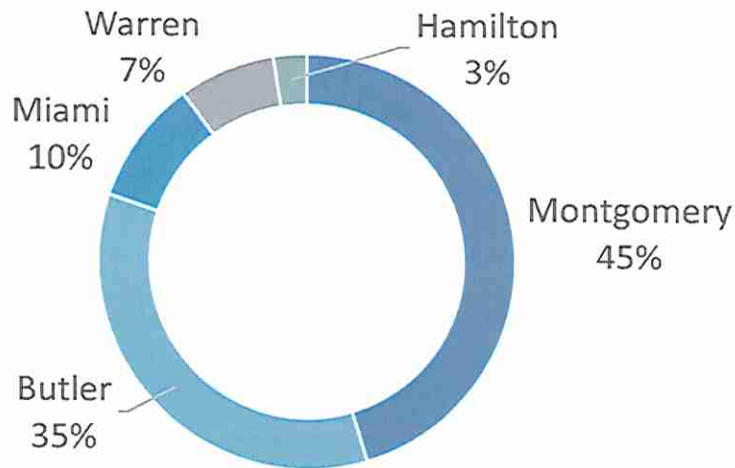


3 Partial Protection Area (Dams) (blue areas)	
<b>MAINTENANCE ASSESSMENT</b> <ul style="list-style-type: none"><li>• \$7 increase (\$29/year)</li></ul>	<b>CAPITAL ASSESSMENT (1%)</b> <ul style="list-style-type: none"><li>• \$10/year</li></ul>
<b>~\$3/month</b>	



# 7<sup>th</sup> Readjustment Maintenance (2.78%) & Capital (1%): Preliminary Projections

Over 42,000 individual parcels contribute to Maintenance Assessments



88% of individual assessments are under \$340/year, <\$33/month for flood protection

Protecting. Preserving. Promoting.

# UNIT BENEFITS



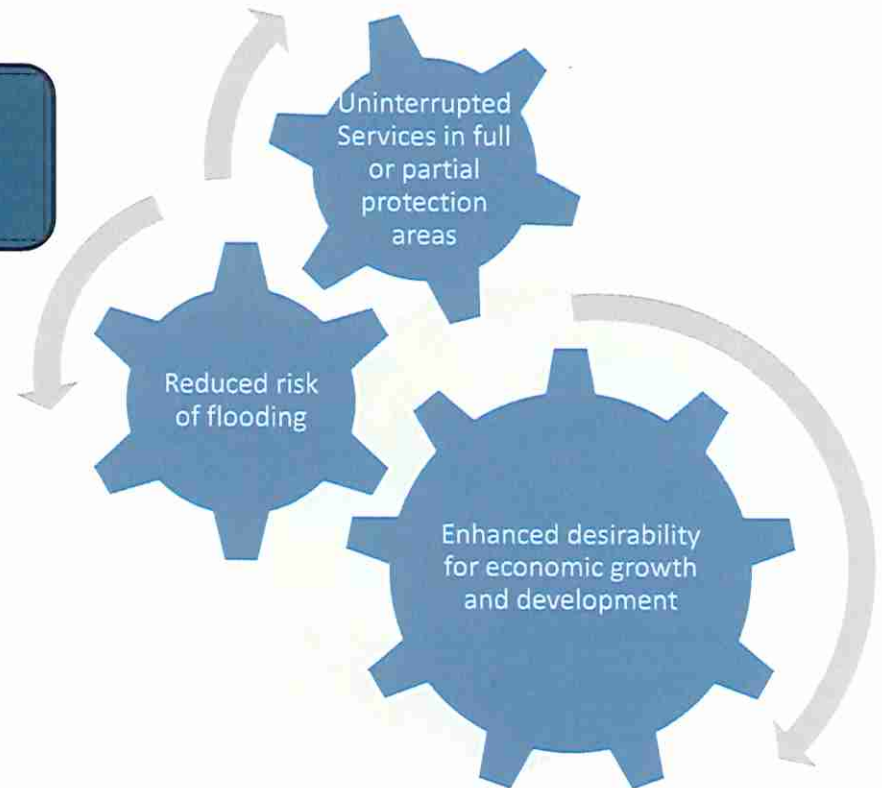
---

Protecting. Preserving. Promoting.



## Public corporation unit assessments: 5 counties & 21 communities that benefit from flood protection

Local governments own parcels, utilities, streets, parking lots, buildings that receive flood protection, **but are exempt from individual assessments**



Protecting. Preserving. Promoting.



## Public corporation Unit benefits, approved by MCD Board of Appraisers, approved per ORC 6101



Water supplies are not disrupted and contaminated from flood waters



Streets and transportation systems are not blocked by river flooding



Communities are not interrupted due to river flooding



Electric, gas, telephone, and other utilities are not disrupted or destroyed by river flooding



Communities are not regularly engaged in emergency management, rescue, and clean-up from flood events

Protected communities as a whole further benefit from flood protection system.

Reduced risk of flooding - Increased property values - Enhanced desirability for re/development and quality of life, without fear of flooding.

Protecting. Preserving. Promoting.



## *Warren County Projected Unit Assessments, not final 2023 Co. Auditor values*

### Flood Protection Maintenance (2.78%) Assessments

<i>Warren County Public Corp. Unit Assessment</i>	Current, based on: 2012 values/conditions = \$34,000/annual	Projected, collections in 2025, based on: 2023 = \$52,000/annual
---	--	--

### Flood Protection Capital (1%) Assessments

<i>Warren County Public Corp. Unit Assessment</i>	EXPIRED	Projected  2023 = \$20,000/annual
---	---------	---



**The flood protection system positively influences flood insurance rates.**

- MCD protected properties have reduced or avoided flood insurance needs.
- MCD's flood protection reduces the perceived flood risk, leading to potential premium discounts.

**Average premium in US for flood insurance is almost \$900 /year**



# Next steps ... next 6 months





Thriving communities, a healthy watershed, and a higher quality of life – sustained by well-managed water resources throughout the watershed.

[www.mcdwater.org](http://www.mcdwater.org)

@MCDWater



---

Protecting. Preserving. Promoting.

Thank You



**THE MIAMI  
CONSERVANCY  
DISTRICT**